

# Stainless Steel Media Filter Stations

## Applications

Vertical stainless steel sand media filters, designed for large commercial irrigation systems where a high quality of filtration is required.

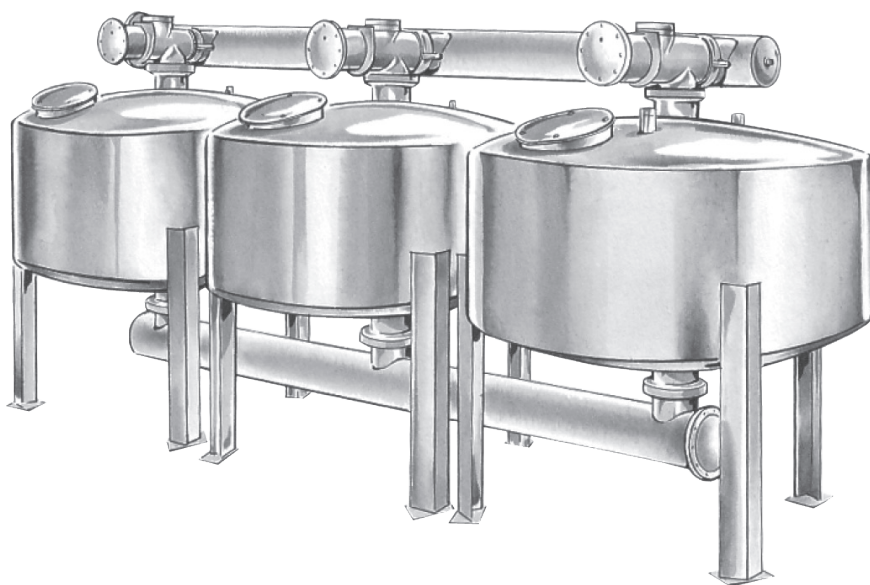
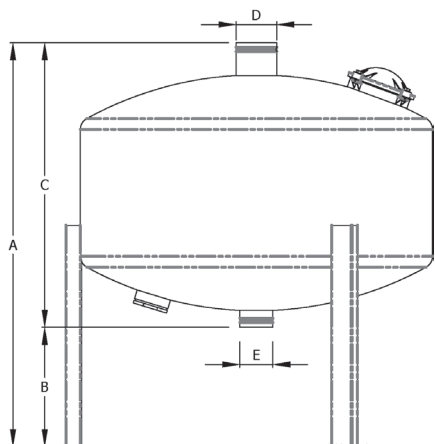
### Features

- Available as manifolded kits to filter a wide range of flows
- Kits can be further manifolded when higher flow rates are required
- Constructed of durable stainless steel to provide a lifetime of service
- Unique 'flow balanced' under-drain designed for trouble-free operation
- Ensures even water distribution during filtration and backwash
- Multiple stainless steel under-drain inlets with V-shaped slots help reduce particle entrapment
- Station includes tanks, inlet and outlet manifold, backwash valves, associated manifold fittings, back-up strainer, manifold supports, hydraulic control assembly.

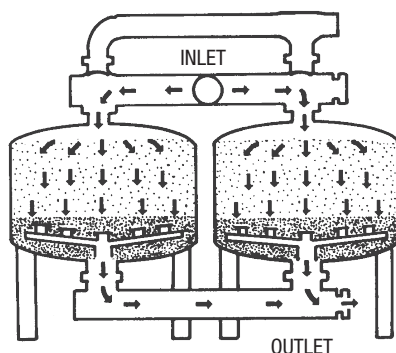
Not included are; solenoids, controller, media, PD switch, controller support bracket, back wash line and associated fittings, air release valve.

### Specifications

- Media Tanks and Manifold: Grade 304 Stainless Steel
- Backwash Valves and Port Hole Covers: Cast Iron ASTM A126 Class B with fusion epoxy coat
- Valve Components: Type 304 Stainless Steel, PVC stem and O-rings
- Pressure Rating: 1000 kPa

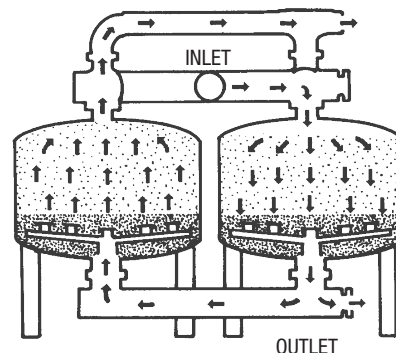


The key to trouble free irrigation. Vertical, stainless steel sand media filters, available in a range of models and flows to suit most applications.



#### Filtering

The under drain inlets are evenly placed beneath the sand media bed and provide for uniform 'lift' during backwash, as well as uniform through-flow during filtration.



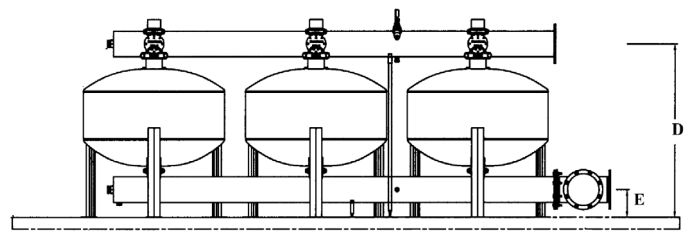
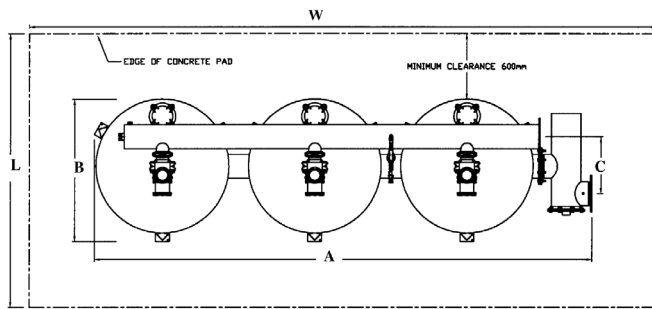
#### Backwashing

This 'lift' creates rapid mobilisation of the sand bed, enabling shorter backwash cycles, less backwash disposal and energy cost savings.

### Stainless Steel Media Tank Dimensions

Tank Size mm/inch	A (mm)	B (mm)	C (mm)	D (mm)	E (mm)
600/24	1054	260	794	114	89
900/36	1229	375	854	114	114
1100/45	1270	413	857	140	114
1200/48	1397	413	857	140	114

# Stainless Steel Media Filter Stations cont.



Pad dimensions typically allow a minimum clearance of 600 mm all around the filter assembly as per the diagram above.

Assembled Dimensions								
No. of Tanks	A (mm)	B (mm)	C (mm)	D (mm)	E (mm)	Manifold Diam. (mm)	L (mm)	W (mm)
2x600	1830	764	203	1151	171	80	1964	3030
3x600	2690	715	353	1151	156	100	1915	3887
4x600	3440	715	353	1151	156	100	1915	4640
2x900**	2491	996	83	1473	390	100	2196	3691
3x900**	3599	996	444	1473	366	150	2196	4786
4x900**	4636	996	444	1473	366	150	2196	5836
3x1100	4230	1218	526	1375	247	200	2418	5430
4x1100	5480	1218	526	1375	247	200	2418	6680
3x1200	4574	1296	517	1486	239	200	2496	5772
4x1200	5974	1296	517	1486	239	200	2496	7172
5x1200	7437	1296	678	1485	186*	250	2496	8636
6x1200	8837	1296	678	1485	186*	250	2496	10036

\* Note: Flange Radius 208 mm – Lower than floor level

\*\* Based on 'new design' tank

Technical Data								
Code	No. of Tanks	Filter Area (m <sup>2</sup> )	Backwash* Flow (m <sup>3</sup> /h)	Flow (m <sup>3</sup> /h)**	Flow (m <sup>3</sup> /h)***	Back-up Filter	No. of 25kg Gravel Bags	No. of 25kg Sand Bags
101FSS0224	2x600	0.56	22	25.2	36.4	1014472	4	12
101FSS0324	3x600	0.84	22	37.8	54.6	1014737F	6	18
101FSS0424	4x600	1.12	22	50.4	72.8	1014737F	8	24
101FSS0236	2x900	1.28	51	57.6	83.2	1014737F	6	18
101FSS0336	3x900	1.92	51	86.4	124.8	1014738F	9	27
101FSS0436	4x900	2.56	51	115.2	166.4	1014738F	12	36
101FSS0345	3x1100	2.97	79	133.7	193.0	1014733F	24	66
101FSS0445	4x1100	3.96	79	178.2	257.4	1014733F	32	88
101FSS0348	3x1200	3.39	90	152.5	220.4	1014733F	33	76
101FSS0448	4x1200	4.52	90	203.4	293.8	1014733F	44	104
101FSS0548	5x1200	5.65	90	254.3	367.3	1014739F	55	130
101FSS0648	6x1200	6.78	90	305.1	440.7	1014739F	65	156

\* Based on velocity of 80 m/h

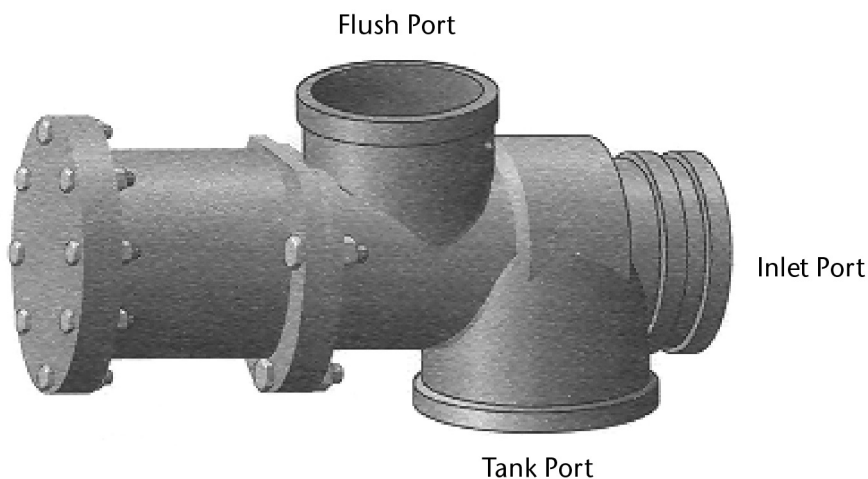
\*\* Based on velocity of 45 m/h or flow rate of 12.5 L/s/m<sup>2</sup>

\*\*\* Based on velocity of 65 m/h or flow rate of 18 L/s/m<sup>2</sup>

Note: The flow ranges given in these tables are indicative only. All filter selections must be based on de-rating the flow capacity to suit the grade of filtration required, the particulate size and load and seasonal variations.

# Stainless Steel Media Filter Stations cont.

Backwash Valve for Stainless Steel Filter

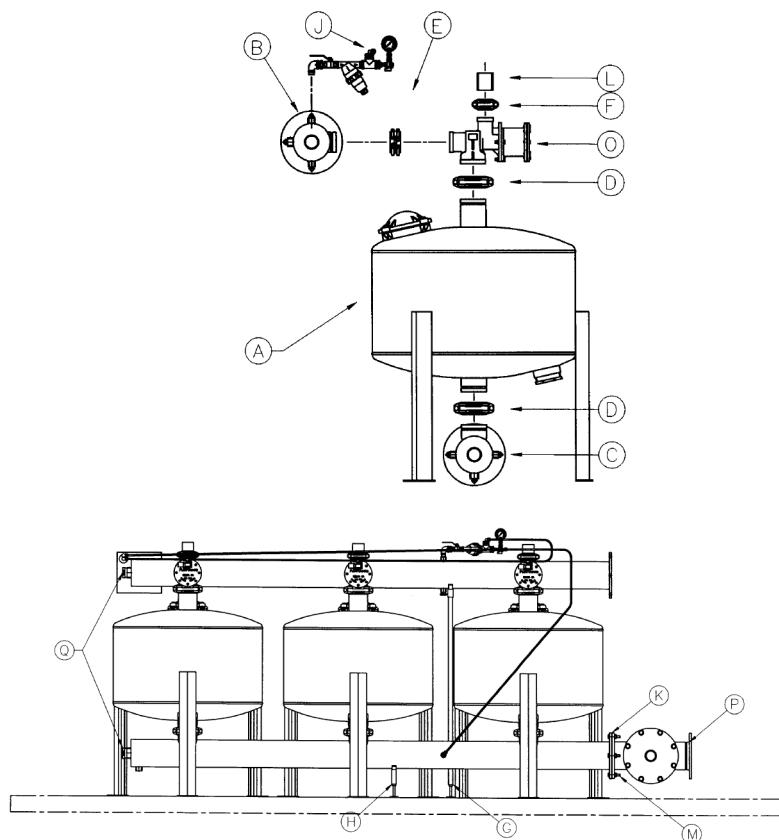


## Backflush Valve Dimensions

Tank Size (mm)	Flush Valve Code	Inlet Port Grooved (inch/mm)	Tank Port Grooved (inch/mm)	Flush Port Grooved (inch/mm)	Weight (kg)
24/600	F011526	3 / 80	4 / 100	2½ / 65	12.6
36/900	F011526	3 / 80	4 / 100	2½ / 65	12.6
45/1100	F011551	4 / 100	5 / 125	4 / 100	13.6
48/1200	F011551	4 / 100	5 / 125	4 / 100	13.6

Item Label	Description
A	Filter tank
B	Inlet Manifold
C	Outlet Manifold
D	Tank Outlet Victaulic Coupling
E	Valve Inlet Victaulic Coupling
F	Valve Backwash Victaulic Coupling
G	Inlet Manifold Support
H	Outlet Manifold Support
I*	Hydraulic Tube Kit – suits up to 3 tanks
J	Hydraulic Charging Head
K	Table D Insertion Gasket
L	PVC Grooved Adaptor
M	GI Nut, Bolt and Washer
N*	Teflon Tape one roll per tank
O	Backwash Valve
P	Flanged Basket Strainer
Q	50 mm Poly Plug
R*	20 mm Poly Plug

\* Not shown on drawing



Flush Port Victaulic Adaptor detail  
65 mm PVC victaulic adaptor acts as a 50mm PVC socket.  
100 mm PVC victaulic adaptor acts as a 100mm PVC adaptor.