

**TORO****Count on it.****EVOLUTION® Series****NEW**

**Introducing the next generation in controllers! With an intuitive interface and exclusive features, the new Toro® EVOLUTION® irrigation controller is an easy choice for residential and light-commercial applications.**

## Controller Interface

The EVOLUTION® controller's interface is a system of informative yet easy-to-understand screens that are quickly accessible using the controller's shortcut buttons.



## Features

### Revolutionary Interface

The EVOLUTION® controller's user interface is designed with the customer in mind. The graphics display navigates similar to many modern consumer electronic devices.

### Homeowner and Contractor friendly

Shortcut buttons provide the homeowner quick access to basic functions while the advanced menu leverages the experience and knowledge of the irrigation professional.

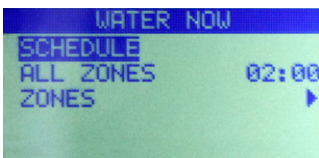
### Computer-programmable with USB Drive

Simple-to-use software allows you to program everything at a computer. Use a standard USB drive to transfer programming to one or more controllers in a matter of seconds. The USB drive also provides controller logging functionality to save an operation log for diagnostic purposes. Download free from [www.toro-evolution.com](http://www.toro-evolution.com).



## Standard Functions

The Standard menu gives the homeowner access to the most fundamental functions of the controller, such as manual watering, setting watering days and start times for a single schedule, and adjusting the amount of irrigation, all directly accessible through dedicated shortcut buttons.



For example, the Water Now Screen allows the user to begin watering with as few as just two button presses, with the option of starting a specific schedule, specific zone, or watering all zones in series.



Another example is the Review Screen, which is an at-a-glance summary showing which days the controller is going to water in the next seven days for the schedule you select.



## Advanced Functions

The Advanced menu gives the contractor access to the full power of the EVOLUTION® controller, including the ability to set up multiple irrigation and auxiliary schedules and create custom grow-in schedules - all operations that may otherwise overwhelm a homeowner.



For example, the Apply Sensors screen allows the user to easily view and configure all the sensors available to the controller, including rain, ET, and soil.



The Grow In Screen allows the user to set up a grow-in schedule for a user-defined period of time (up to 90 days), after which the controller will default back to its normal irrigation schedule(s).

## Dimensions

- 286 W x 197 H x 114 D
- Weight: 2 kg

## Electrical Specifications

- Electrical input power:
  - 240 VAC
  - 30 VA maximum
- Station output power:
  - 24 VAC
  - 0.75 amps per station maximum
  - 0.75 amps pump/master valve
  - 1.0 amps total load
- Surge Protection:
  - 6.0 KV common mode; 1.0 KV normal mode
- Operation of two solenoids per station (up to 0.75 amps per station max)

## Programming

- One schedule in the default “standard” mode
- Up to six schedules in “advanced” mode:
  - Three irrigation schedules, four start times per schedule
  - One fixed auxiliary schedule
- Three scheduling choices:
  - Seven-day calendar
  - 1 to 30-day interval with up to seven day exclusions
  - Odd/even days with up to seven day exclusions
- Monthly season adjust by schedule
- Schedule stacking, with automatic split cycle when season adjust is greater than 100%
- Grow-in schedule settable up to 90 days automatically reverts to regular irrigation schedule
- Station runtimes from one minute to twelve hours
- Allows 30, 60, or 90 second manual runtimes for operations such as winterisation/flushing
- Programmable well-recovery/station-delay from 1 to 60 seconds or 1 to 60 minutes
- Pump start delay from 1 to 60 seconds
- Master valve on/off by zone
- Timed water off from one to fourteen days
- Compatible with normally-closed rain sensors
- Automatic short detection for circuit protection and faster troubleshooting
- Non-volatile memory doesn’t require batteries and holds programming for up to five years

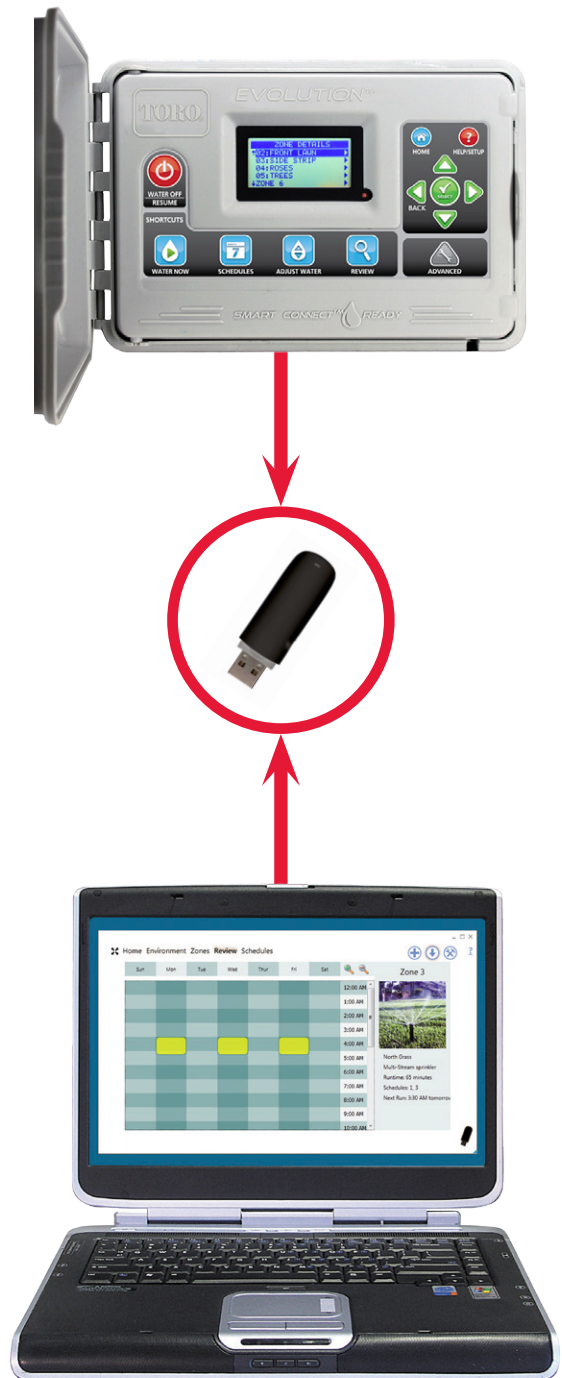
## Warranty

- Three years

EVOLUTION® Series	
Model	Description
• EVO-4OD-AU	4-station Outdoor Controller
• EMOD-4 • EMOD-12	4-station Expansion Module 12-station Expansion Module

## Hardware

- 4 to 16 stations with 4 and 12 station expansion modules
- Cabinet easily mounts to the wall through two easily-accessible screw holes on the upper left-hand and right-hand sides of the controller
- Red LED next to display lights in the event of an alert
- 128 x 64 pixel graphical display
- 9V Battery (not supplied) on the timing mechanism for “armchair” programming
- Outdoor key-lockable cabinet manufactured out of durable UV-resistant plastic and includes standardised key used on many of the most popular controllers



**For more information, please phone 1300 130 898 or visit [toro.com.au](http://toro.com.au)**

**TORO Toro Australia Pty Ltd**