

Insertion Tool for Micro Fittings and Emitters

Applications

A great solution for inserting poly fittings, drippers and sprinklers into 4 mm low density polyethylene tube. Suitable for gardeners, garden owners, landscape contractors and agriculturalists.

Operating Instructions

1. Choose the right-sized hole in the drum for the fitting by pulling the drum down and turning it, align it with groove in the grips. Release your hold on the drum and it clicks into place.
2. Place the tip of the fitting into the tube and fit in position in the tool. By squeezing the handles of the tool the fitting is pushed firmly into the tube.
3. At the end of the tool is a cutting blade for cutting the poly tube to its required length.



101INSERTER



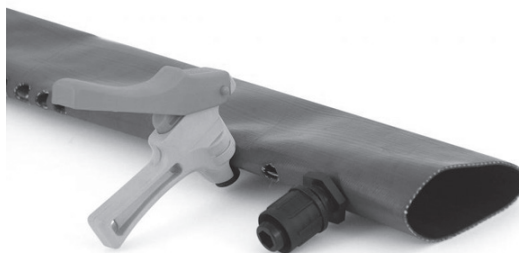
Layflat Cutter

Applications

This is a small efficient tool with a special geometrically constructed cutting blade to facilitate the holing of layflat hose.

Features

- The tool is lightweight, compact and strong, and easy to hold in the palm of the hand
- The waste plastic does not fall into the hose and is discharged from the tool
- This tool cuts a 16 mm hole
- Suits the 1014099 (16 mm tape x double spigot layflat adaptor) and 1014115 (22 mm tape x layflat adaptor)



101LFC16

Ordering Information

Code	Description
101INSERTER	Insertion Tool for inserting Micro fittings into Micro Tube
101LFC16	Layflat Cutter – 16 mm hole size