

Irrigation Water Meters - 15 mm to 25 mm Single Jet

Application

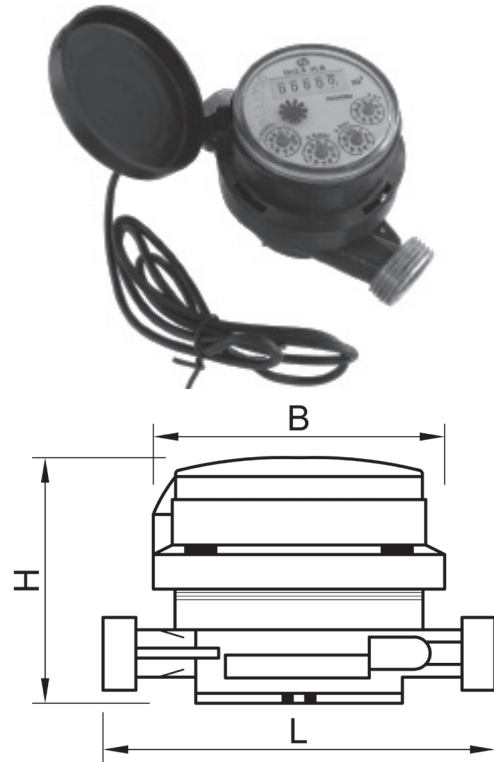
For use in agricultural, commercial turf and landscaping irrigation systems where water usage totals are required.

A factory fitted pulse output enables the water meter to be connected to a suitable irrigation controller to monitor flow rates and the controller to create flow alarms for valve and mainline failure.

Not suitable for Water Authority metering.

Features

- Conform to OIML R49 Class 2
- Cyclometer is hermetically sealed
- The body is made of bronze with baked powder external surface treatment
- Maximum working temperature: 30°C
- Factory supplied pulse output as standard
1 pulse = 10 Litres
- Supplied with couplings, washers and internal filter
- Install water meter horizontally, with dial facing upwards
- 'Not intended to use for trade'
- Not watermarked
- 12 Month Replacement Warranty



Ordering Information	
Code	Description
WMSJ-015-P10	15 mm Single jet meter, 10L/pulse, MBSP
WMSJ-020-P10	20 mm Single jet meter, 10L/pulse, MBSP
WMSJ-025-P10	25 mm Single jet meter, 10L/pulse, MBSP

Specifications			
SIZE (mm)	15	20	25
Operation	Single jet Inferential	Single jet Inferential	Single jet Inferential
Overload Flow m ³ /h (Q max)	3	5	7
Continuous Flow m ³ /h (Qn)	1.5	2.5	3.5
Transitional Flow l/h +/-2% (Qt)	120	200	280
Minimum Flow l/h +/-5% (Q min)	30	50	70
Minimum Reading (l)	0.001	0.001	0.001
Maximum Reading (m ³)	99999.9999	99999.9999	99999.9999
Maximum Operating Pressure (MPa)	1.6	1.6	1.6
Litres / Pulse	10	10	10
Length (L) (mm)	110	130	160
Width (B) (mm)	81	81	81
Height (H) (mm)	86	86	86
Maximum Working Temperature (°C)	30	30	30