



Low head drainage can be seen in an elevation change of fewer than six inches. The resulting runoff and water waste can lead to landscape erosion, unsafe conditions on hardscapes and sidewalks, and pooling around spray heads. The Toro Precision™ Check Valve saves water and eliminates runoff by immediately sealing the spray head at its connection point at the end of the irrigation cycle, thereby preventing the draining of lateral lines through the lowest-lying heads.

## FEATURES & BENEFITS

### Hold Back Strength of Up to 15 Feet

Capable of compensating for elevation changes in a zone of up to 15 feet, the Precision™ Check Valve (PCV) eliminates issues with low head drainage and the resulting water waste.

### Spring-Actuated Design

Spring actuation ensures an immediate check when the irrigation cycle ends.

### Low Profile

With an overall profile of just under 1 1/4" cubic inches, the PCV-500 adds less than 3/8" of height to retrofitted spray heads and can be retrofitted to side inlet spray heads with minimal digging. The low profile design makes the PCV-500 ideal for turf or slope applications.

### A Universal Fit

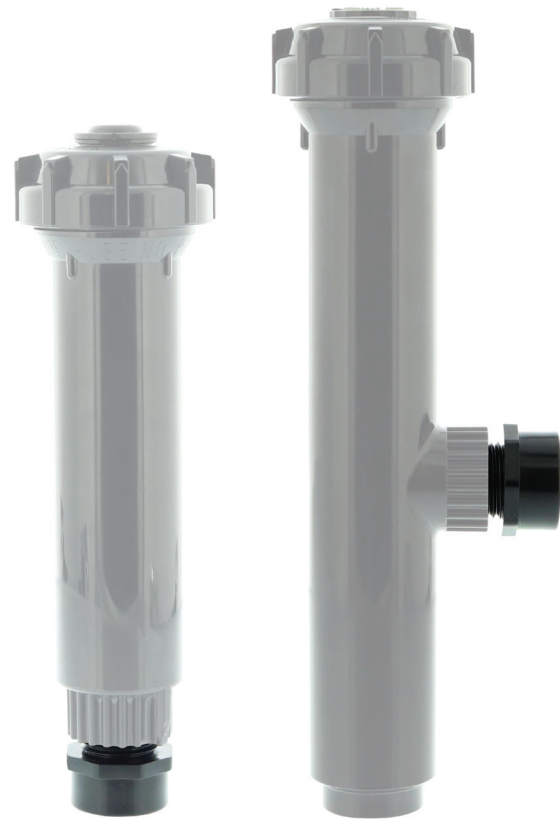
Featuring 1/2" NPT threads, the PCV fits all major manufacturers' spray bodies and fittings.

#### PRECISION™ CHECK VALVE MODEL LIST

Model	Description
PCV-500	15' Check Valve, 1/2" NPT



**www.toro.com**  
**The Toro Company** • Irrigation Division • 5825 Jasmine St.  
 • Riverside, CA • 92504 • 877-345-8676 • P/N 16-1150-IRC  
 Specifications subject to change without notice.  
 For more information, contact your local Toro distributor.  
 ©2016 The Toro Company. All rights reserved.



#### PCV-500 PRESSURE LOSS DATA

Flow Rate (gpm)	1	2	3	4	5
Pressure Loss (psi)	5.1	6.0	6.5	7.0	10.2

*Note: Use of the PCV-500 is not recommended for irrigation systems with dynamic operating pressure of less than 35 psi.*

#### Specifying Information—Precision™ Check Valve

PCV-XXX	
Model	Thread Size
<b>PCV</b>	<b>XXX</b>
PCV—Precision™ Check Valve	500—1/2" NPT, Mx F