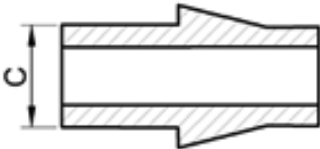


Antelco Standard Barb Shank Dimension	
Description	Dimension C (mm)
Antelco 25	25.0
Antelco 21	20.8
Antelco 20	20.5
Antelco 19 barb fitting	19.0
Antelco 19 (3/4" & 1/2" Tees, Elbow)	18.8
Antelco 18	17.6
Antelco 16	15.7
Antelco 15	14.6
Antelco 14	14.0
Antelco 13	12.6
Antelco 10	9.6
Antelco 5 Adaptor	4.8
Antelco 5 Stake Adaptor	4.8
Antelco 4.5	4.4
Antelco 4 Barb fitting	4.0
Antelco 4 Stake Adaptor	4.2
Antelco 4mm Hypodermic	4.0

Capo® Rubber Grommet – Hole Saw Specification		
CAPO® Grommet Size	Product Code	Hole Saw Size
CAPO® RUBBER GROMMET 13 mm	10145735	16 mm
CAPO® RUBBER GROMMET 16 mm	10145745	19 mm
CAPO® RUBBER GROMMET 19 mm	10145755	22 mm

Use a slow speed drill to ensure a smooth/round hole and prevent shattering of uPVC pipes.



Refer to table on left.